

# NEWSLETTER

ST LUKE'S C OF E PRIMARY GLOSSOP PTA



## Welcome

Welcome to all our new St Luke's families and a big welcome back to our returning families from the Parent Teacher Association (PTA) Committee! We hope all the returning children have enjoyed catching up with friends and have settled into their new classrooms. We hope that all the reception children enjoyed their first day at school and enjoyed meeting their buddies. It was lovely to meet some of the new families at our Welcome Coffee Morning.

As a parent/carer of a child at St Luke's school, you are automatically a part of the PTA so a big welcome into your new role! Don't worry, this doesn't mean you have to sit in the dunk tank or take a pie in the face (hmmmmmm.... maybe one for the Xmas fair) but it just means that you have a great opportunity to be involved in the fun activities we like to put on for the children. Although saying that, it's not all about the children as we have had Quiz Nights and Fashion Shows for the grown ups too.

## Raise money for your PTA through your online shopping

Did you know that you can help us by simply doing your shopping. If you have an Amazon account, please register **St Luke's PTA, Glossop** as your chosen charity on Amazon Smile and we will get a percentage of your shopping from Amazon. If you're not an Amazon shopper then you can also help in other ways by registering for It doesn't cost you a penny.

If you don't shop on Amazon, we are also registered with [www.easyfundraising.org.uk](http://www.easyfundraising.org.uk) which also gives the PTA a percentage of your shopping value when you register with them and shop at stores such as Argos and even ebay!

## What's on?

### October

20th - Disco - we need volunteers to help with food, drink, admittance, supervision - get in touch if you can help. Admission is a £1 voluntary donation with a drink.

### December

2nd- Christmas Fair - we need lots of volunteers to help clean up and help on stalls in the day. We will also need help in advance and as usual, donations of cake are welcome. If you can help in any way on the day or in advance - please get in touch.



## How can you help your PTA?

We welcome any help in any form! We recognise that parents have many commitments and may be able to help in different ways. If it's manning a stall, baking a cake, donating prizes, selling raffle tickets, coming to meetings, giving us ideas or feedback we want to hear from you! Please contact us via school reception on 01457 852602 or via email.

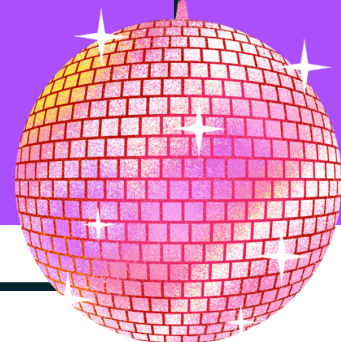
Our next PTA meeting takes place on Tuesday 7 February 2023 at 7pm in the school hall. All welcome!

CONTACT US: [STLUKESPTAGLOSSOP@GMAIL.COM](mailto:STLUKESPTAGLOSSOP@GMAIL.COM)

YOUR COMMITTEE: CHAIR: CHIKA JONES, DEP. CHAIR: ROSIE HOWELL, TREASURER: TIM BARNETT, SECRETARY: KELLY DOOLEY

# DISCO UPDATE

ST LUKE'S C OF E PRIMARY GLOSSOP PTA



*We're really excited for our Autumn disco!*

Grab your glad rags and get ready for our first disco of the year on Thursday 20 October at 5pm! Entry is a £1 donation and you will enter through the main entrance (reception) of the school. This term's theme is Strictly Come Dancing!

## Volunteers

If you would like to stay with your child(ren), you are required to register as a volunteer in advance by sending the PTA an email. This also might mean that you do get a 'job' to do as it's a very busy event and we need as much help as possible however, we will make sure you get plenty of time to check in with your child.

If you are not helping, you can give your child a big hug goodbye and be ready to welcome home a sweaty red-faced child laden down with some awesome 'stuff' when you come to collect promptly at 6:30pm.

## What's happening

As well as dancing to some awesome tunes from DJ Graham, inside the hall we will have temporary tattoos (30p) and a nail bar (30p) along with a whole table full of glowy/bouncy/squishy items you can buy ranging from 10p up to £1.50. Please, please try not to send your child with notes, coins only if possible.

## Refreshments

There will be free juice and water on offer throughout and we will have a £1 meal deal which includes a hot dog and a packet of crisps or a little cake. Vegan options are available but please do let us know in advance if you would like a vegan dog so we can make sure we have enough.

There will also be chocolates, Haribo, cakes and crisps ranging from 25/30p.

# FUNDRAISING UPDATE

ST LUKE'S C OF E PRIMARY GLOSSOP PTA

*You can now help your PTA through your online shopping!*

We are now registered with Amazon Smile! Amazon Smile is a feature of Amazon which, when you register it on your Amazon account, enables to PTA to receive a small percentage of your shopping total. This is just one way to help your PTA by simply doing your shopping.

How to register

It's really simple to set this up. You just need to have an Amazon account.

1. Go to [smile.amazon.co.uk](https://smile.amazon.co.uk), scan the QR code below or scroll down to the options at the bottom of the Amazon Home page. It's listed under 'Charities and Giving'.
2. Log into your Amazon Account when prompted
3. Register your charity: **St Luke's PTA Glossop**
4. You're all set! You don't need to do anything else, Amazon will send a percentage of your shopping total straight to us. Best of all, it costs you nothing and you'll be helping our school!

[smile.amazon.co.uk](https://smile.amazon.co.uk)

